



**SAFETY IS IN YOUR HANDS.
EVERY DIG. EVERY TIME.**



**CHECK
THE BOX®**



Operations, Maintenance and Emergencies (OM&E)



U.S. Department of Transportation

Pipeline and Hazardous Materials Safety Administration

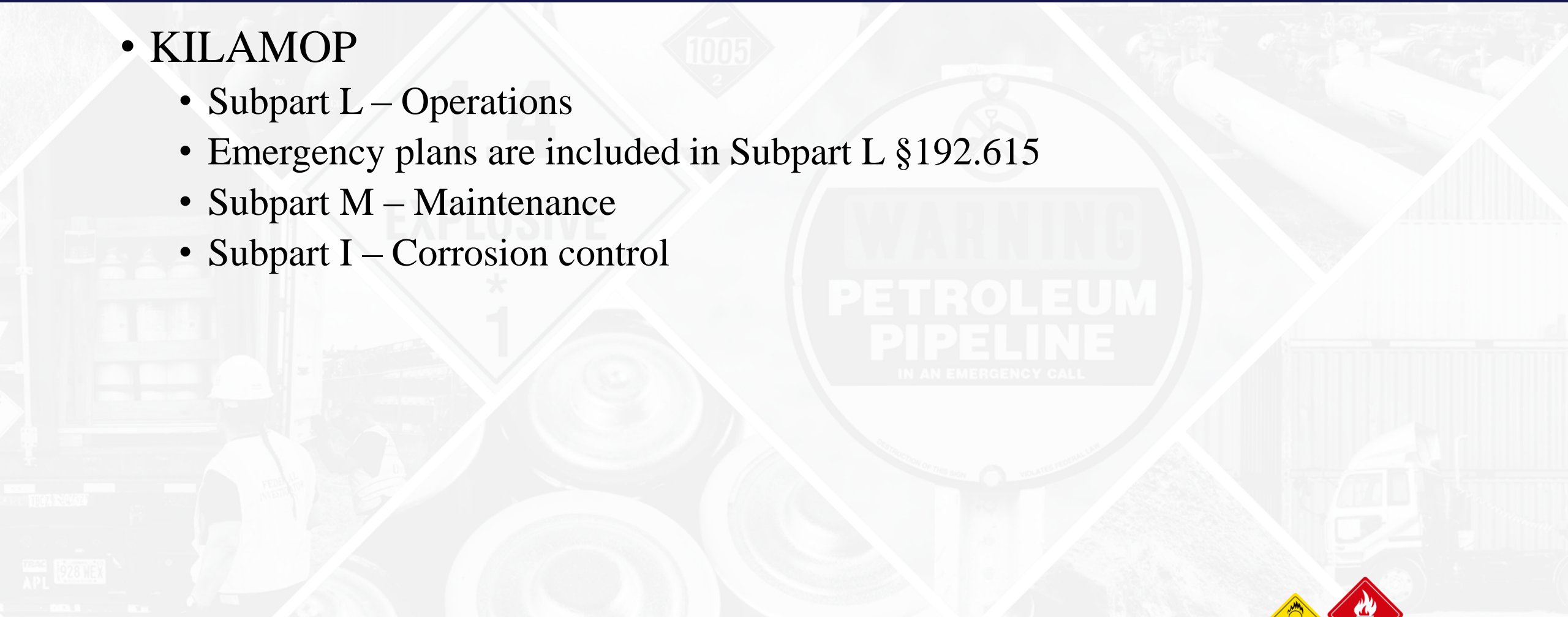
Acronyms

- KILAMOP – Retroactive subparts in Part 192
- MAOP – Maximum allowable operating pressure
- NTE – Not to exceed
- OM&E – Operations, maintenance and emergencies



Retroactive vs Non-Retroactive

- KILAMOP
 - Subpart L – Operations
 - Emergency plans are included in Subpart L §192.615
 - Subpart M – Maintenance
 - Subpart I – Corrosion control



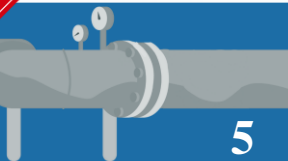
Subpart L – Operations

- §192.603 – General Provisions
 - No person may operate a segment of pipeline unless it is operated in accordance with this subpart
 - Each operator shall keep records necessary to administer the procedures established under §192.605
 - The Associate Administrator or the State Agency may require the operator to amend its plans and procedures as necessary to provide a reasonable level of safety



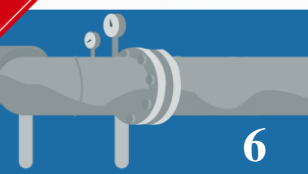
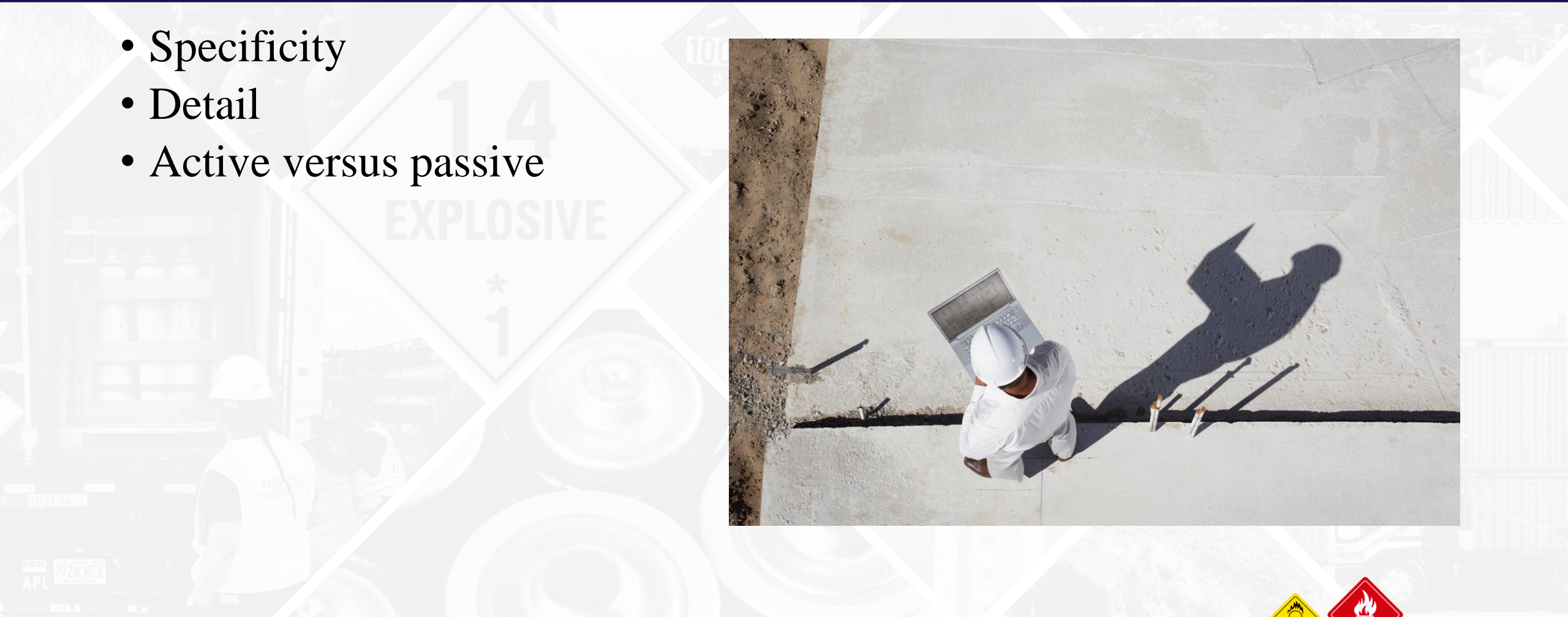
§192.605 OM&E Manual

- Prepare and follow a procedures manual for conducting operations, maintenance and emergency response
- Review each calendar year NTE 15 months



Improving OM&E Procedures

- Specificity
- Detail
- Active versus passive

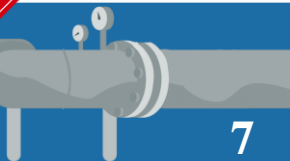


Procedures

Are your procedures specific?

1.4
EXPLOSIVE

*
1



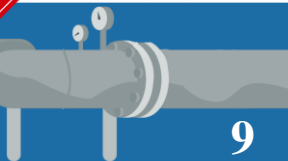
§192.613 Continuing Surveillance

- Procedures required to monitor and act on:
 - Corrosion or substantial changes in cathodic protection requirements
 - Leaks
 - Extreme weather or natural disaster damage or hazards
 - Commence 72 hours after all safe



§192.614 Damage Prevention

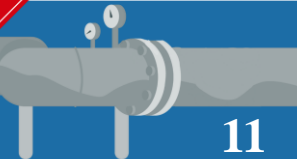
- State adopted one-call
- Current list of local excavators
- Inform the public about lines
- Temporary markings
- Inspect during & after activities
- Leak survey after blasting



Why We Need Damage Prevention



Subpart M – Maintenance



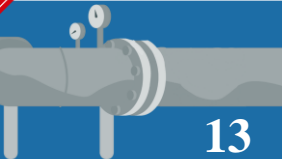
§192.747 Valve Maintenance

Each valve necessary for the safe operation of a distribution system, must be checked and serviced:

Once each calendar year NTE 15 months



Subpart I – Corrosion Control



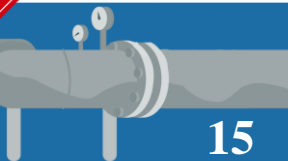
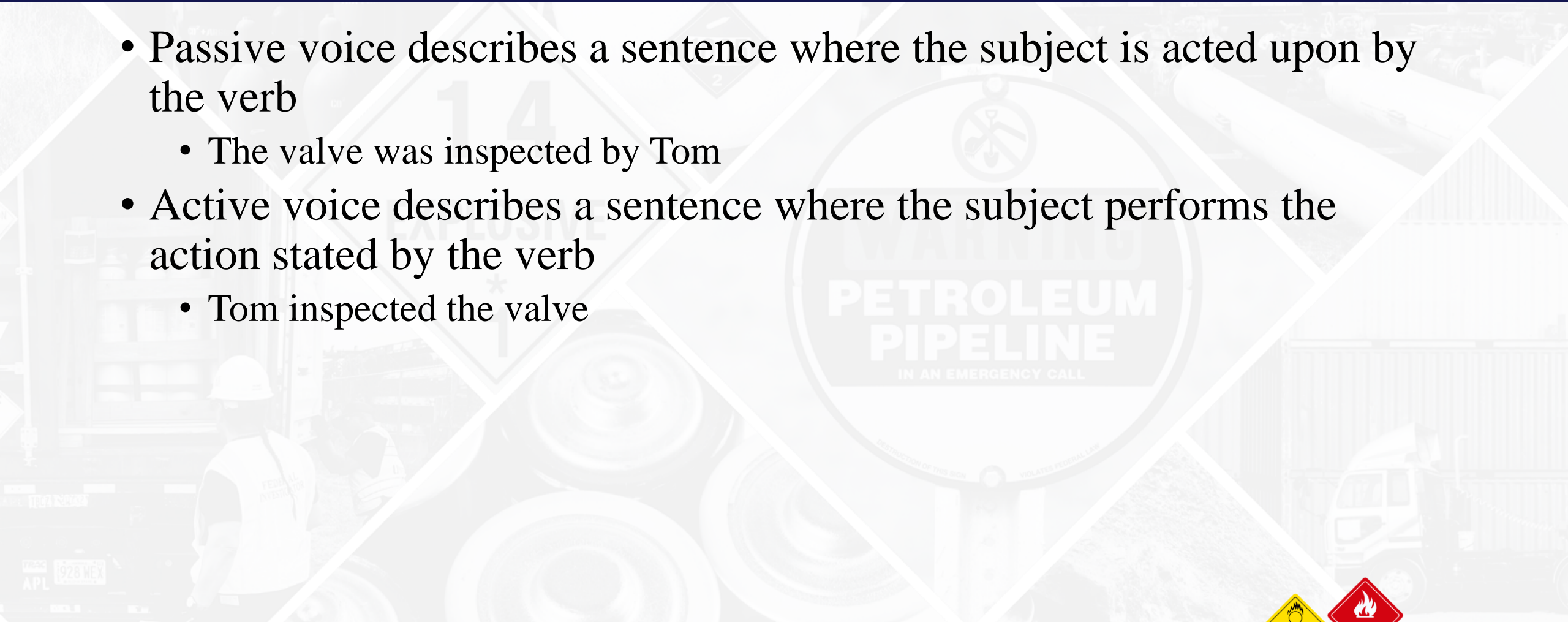
Details Include

- Who
- What
- When
- Where
- How
- Other information to provide clarity



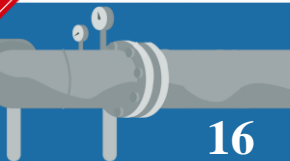
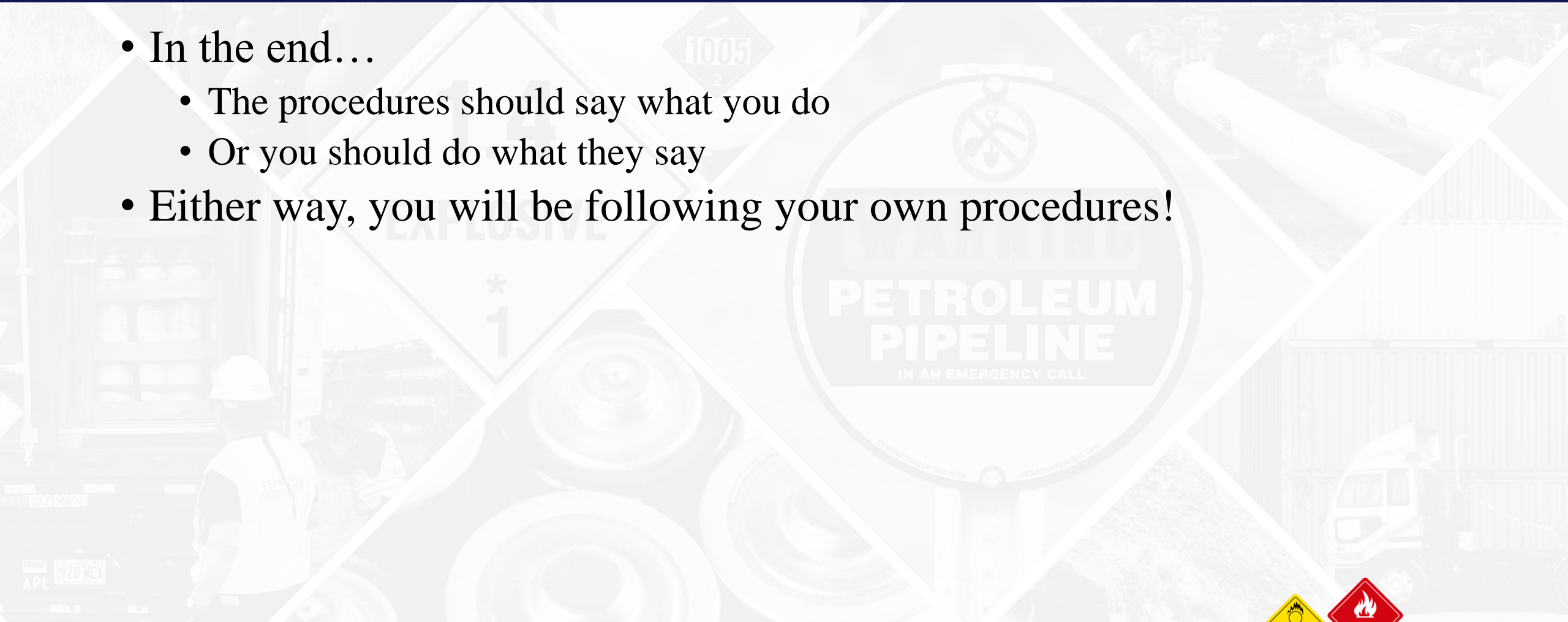
Passive vs Active

- Passive voice describes a sentence where the subject is acted upon by the verb
 - The valve was inspected by Tom
- Active voice describes a sentence where the subject performs the action stated by the verb
 - Tom inspected the valve



Remember

- In the end...
 - The procedures should say what you do
 - Or you should do what they say
- Either way, you will be following your own procedures!





**SAFETY IS IN YOUR HANDS.
EVERY DIG. EVERY TIME.**



Thank You

